

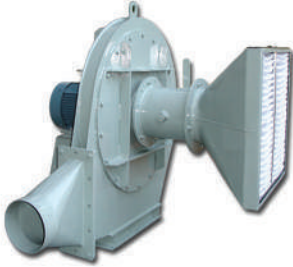
CENTRIFUGAL FANS & BLOWERS





Dyrocon Airtech Pvt Ltd was incorporated by engineers who have been associated with Centrifugal fan, Gas tight dampers, systems like Fume, Dust extraction, Ventilation systems, Environmental protection etc. The areas of specialization covered are system Design, Detailed Engineering, Manufacturing technology, Erection and Commissioning. During its period the company has supplied several fans, Dampers and pollution control equipment's for reputed customers.

TYPE OF FANS



- Centrifugal fans and Blowers
 - * Single Stage
 - * Multi Stage
 - * Fans In Series
 - * High pressure blowers
- Axial flow fans
- Limit load fans
- Boiler ID, FD & SA Fans



TYPE OF BLADES

- Backward Curved
- Backward Inclined
- Aerofoil
- Self Cleaning
- Radial Type



RANGE

BACKWARD BLADED FANS

Type HB-1: Flow range - 300 to To 36,000 m³/hr, Pressure – 2,000 mmwg

Type HB-2: Flow range – 10,000 to To 10,00,000 m³/hr, Pressure – 2,000 mmwg

Type HB-3: Flow range – 30,000 to To 20,00,000 m³/hr, Pressure – 2,000 mmwg



AXIAL FLOW FANS

Type HAF: Approx range 3,600 to 1,00,000 m³/hr. - 120 mmwg)

Type HAH: Approx range – 1,00,000 to 3,00,000 m³/hr -Pressure 300mmwg

LIMIT LOAD FANS

Type HL: Approx range 3,000 to 5,00,000 m³/hr – pressure 150mmwg



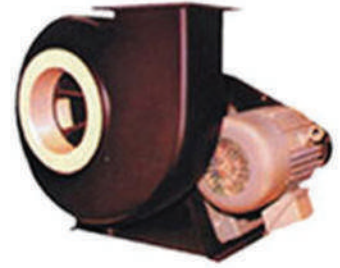
TYPE OF DRIVES

- Directly mounted on motor shaft
- Belt Driven
- Coupled Driven



IMPELLER MATERIALS

- Mild Steel,
- Stainless Steel
- FRP
- Aluminium
- Weldom
- Duplex
- Rubber Lining
- and other special materials based on the applications.



INLINE CENTRIFUGAL FAN

Backward Curved / Inclined

- Size from 300 to 1400mm
- Capacity upto 80000 CMH
- Static pressure upto 220 mmwg
- Application : Ventilation and smoke spill applicati



JET FAN

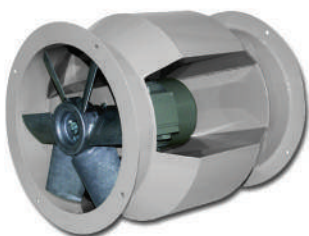
- Size upto 600mm
- Capacity upto 5000 CMH
- Application : Carpark and Tunnel Ventilation



AXIAL FAN

Direct / Belt Driven

- Type: Fixed and Adjustable Pitch Blades
- Size from 300 to 2000mm
- Capacity upto 360000 CMH
- Static pressure upto 100mmwg
- Application : Ventilation (Supply & Exhaust)



Bifurcated

- Type: Fixed and Adjustable Pitch Blades
- Size from 300 to 2000mm
- Capacity upto 360000 CMH
- Static pressure upto 100mmwg
- Application : Hot Air Fan and Fume Exhaust



Heavy duty Impeller under dynamic Balancing...



Ventilation Blowers



Fan for Vertical Mounting

 **DYROCON AIRTECH PVT LTD**

Flat No - 2A, 4th Floor, Gokul Towers, No 9 & 10, C.P Ramasamy road, Alwarpet, Chennai - 600018,
Phone - +91 44 24988007, Telefax - +91 44 24671734,
Email : info@dyrocon.com
Website : www.dyrocon.com